









An impressive larger style two bedroom semi-detached house, occupying a pleasant position within this popular area of Grindon. Finished to an excellent standard throughout, the property comprises lounge opening through to dining, conservatory and modern fitted kitchen. To the first floor there are two well-proportioned bedrooms and a contemporary bathroom/wc. Externally there are attractive gardens to the front and rear. This convenient location is ideally placed for local amenities, shops and schools as well as providing excellent connections to surrounding areas and major road including the A19. Early viewing is highly recommended to avoid disappointment!

MAIN ROOMS AND DIMENSIONS

Ground Floor

Access via UPVC entrance door.

Lounge 12'0" x 17'2"



Double glazed bay window to front, double glazed window to side, electric fire and radiator. Stairs to first floor with storage under. Opening into dining room.

Dining Room 7'10" x 8'8"



UPVC double glazed sliding door to conservatory. Radiator. Door to kitchen.

Kitchen 9'3" x 8'0"



Range of wall and base units with wood effect countertops over incorporating a single bowl stainless steel sink and drainer with mixer tap. Integrated oven, electric hob and hood, space for a fridge freezer and washing machine. Chrome heated rail and double glazed window to rear.

Conservatory 7'6" x 10'9"



Double glazed windows and UPVC French patio doors to rear.

First Floor Landing



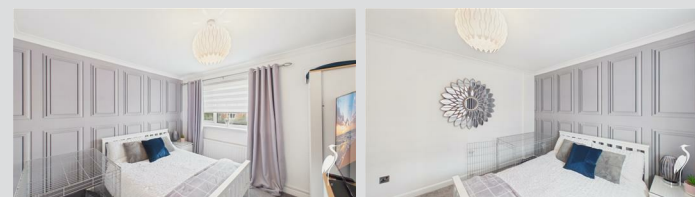
Double glazed window to side and access point to loft.

Bedroom 1 10'0" x 14'0"



Double glazed window to rear, radiator and storage cupboard.

Bedroom 2 10'3" x 10'7"



Double glazed window to rear and radiator.

Bathroom



Low level WC, washbasin and bath with shower over, chrome heated towel rail and double glazed window to rear.

Outside



Block paved garden to the front with side access to low maintenance garden with block paved area and decking seating area. Outhouse.

Council Tax Band

The Council Tax Band is Band A.

Important Notice - Particulars

Peter Heron Ltd for themselves and for the vendors of this

Visit www.peterheron.co.uk or call 0191 510 3323

Tried. Trusted. Recommended. City Branch 20 Fawcett Street Sunderland SR1 1RH Fulwell Branch 15 Sea Road Fulwell Sunderland SR6 9BS

MAIN ROOMS AND DIMENSIONS

property whose agents they are, give notice that:-
The particulars are set out for general guidance only for the intending Purchasers and do not constitute part of an offer or contract. Whilst we endeavour to make our sales particulars accurate and reliable, if there is anything of particular importance which you feel may influence your decision to purchase, please contact the office and we will be pleased to check the information. Do so particularly, if contemplating travelling some distance to view the property. All descriptions, dimensions, references to conditions and necessary permissions for use and occupation and other details are given in good faith, and are believed to be correct, however any intending purchasers should not rely on them that statements are representations of fact, but must satisfy themselves by inspection or otherwise as to the correctness of each of them. Independent property size verification is recommended.
Lease details, service charges and ground rent (where applicable) are given as a guide only and should be checked and confirmed by your Solicitor prior to exchange of contracts. No person in the employment of Peter Heron Ltd has any authority to make or give any representation or warranty whatever in relation to this property or these particulars, nor to enter into any contract on behalf of Peter Heron Ltd, nor into any contract on behalf of the Vendor. The copyright of all details and photographs remain exclusive to Peter Heron Ltd.
Please note that in the event the purchaser uses the services of Peter Heron Conveyancing in the purchase of their home, Peter Heron Ltd will be paid a completion commission of £300.00 by Movewithus Ltd.

Fawcett Street Viewings

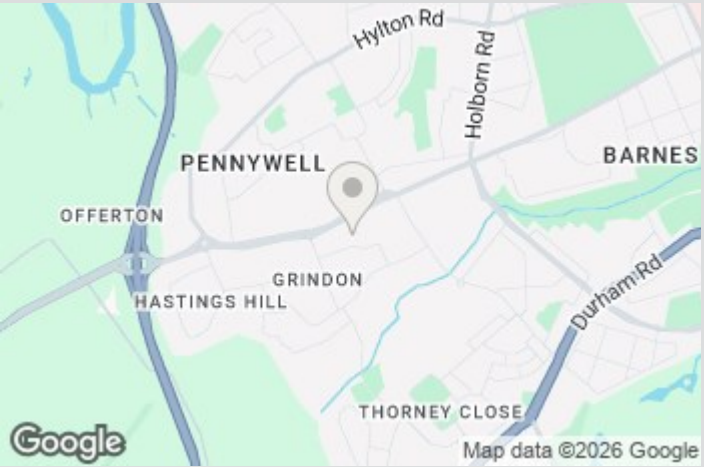
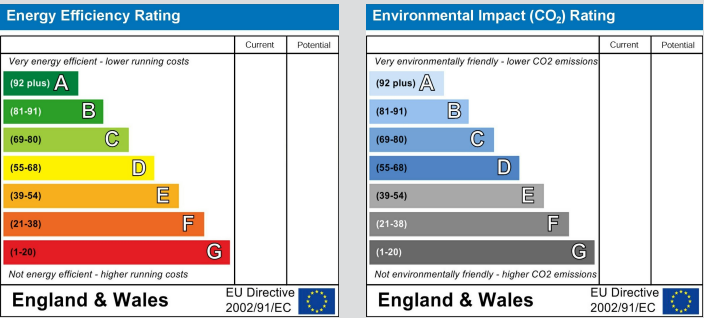
To arrange an appointment to view this property please contact our Fawcett Street branch on or book viewing online at peterheron.co.uk

Opening Times

Monday to Friday 9.00am - 5.00pm Saturday 9.00am - 12noon

Ombudsman

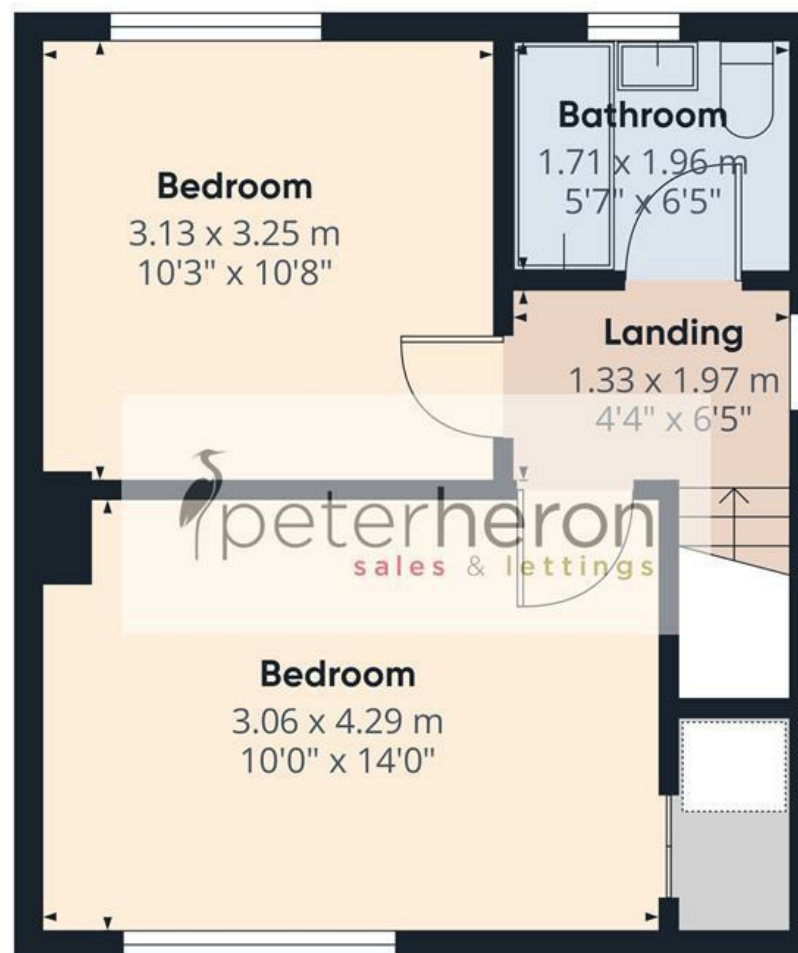
Peter Heron Estate Agents are members of The Property Ombudsman and subscribe to The Property Ombudsman Code of Practice.



Visit www.peterheron.co.uk or call 0191 510 3323

Tried. Trusted. Recommended.

City Branch 20 Fawcett Street Sunderland SR1 1RH Fulwell Branch 15 Sea Road Fulwell Sunderland SR6 9BS



First Floor

Approximate total area⁽¹⁾

69.8 m²

752 ft²

(1) Excluding balconies and terraces

Calculations reference the RICS IPMS 3C standard. Measurements are approximate and not to scale. This floor plan is intended for illustration only.

GIRAFFE360